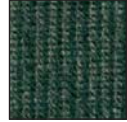


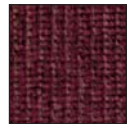
*Leisure*  
COLLECTION



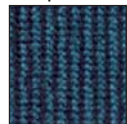
Kelly



Merlot



Deep Sea



Sandstone



The Fairmont is the premiere model of the Leisure Collection. Featuring a well appointed, seamed back and a full chaise pad, the Fairmont offers hours of comfort with a smart style at an affordable price.

## Fairmont

UC 330

shown in Deep Sea  
with optional  
head rest cover



*UltraComfort*  
AMERICA

*Positioning you for life.*

# Fairmont

Leisure  
COLLECTION

Model Number	UC330
Size	Large
Weight Capacity	375 LB
Recline Positions	3
Standard Fabrics	4
Fabric Options	0
Chaise Seat	Yes
Back Type	Seam
Head Rest Cover	Yes
Arm Covers	Yes
Battery Back Up	Yes
Overall Width	34"
Overall Height	43"
Width Between Arms	23"
Floor to Top of Seat	20.5"
Seat Depth	22"
Seat to Top of Back	29.5"
Seat to Top of Arm	5.5"
Floor to Back Edge of Seat Raised	29"
Floor to Front Edge of Seat Raised	25"
Seat Angle Raised	16°
Floor to Top of Foot Rest Reclined	23"
Floor to Top of Back Reclined	33"
Back Angle Closed	110°
Back Angle Reclined	140°
Foot Rest Angle Closed	90°
Foot Rest Angle Opened	176°
Distance Required from Wall Reclined	18"
Extension Reclined from Back of Seat to End of Foot Rest	43"
Life Time Warranty, Chair Frame, Lift Frame, Recline Mechanism	Yes
Warranty on Electrical parts	2 YR
Pro Rated Years 4 Thru 7	No
Warranty on Mechanical Labor	6 MOS
Warranty on Electrical Labor	6 MOS
Removable Back Standard	Yes
Customizable *	Yes
Left Hand Control Option Available	Yes
Extra Pocket Option Available	Yes
Heat & Massage Option Available	Yes
Foot Rest Extension Option Available	Yes

\* See Customize Chart for dimension limits  
 Sizes may vary depending on fabric, filling material, upholstery and carpet thickness. All measurements taken on concrete floor using levels and metal rulers.

All UltraComfort America lift chairs are constructed of the highest quality materials. The frames are composed of northern maple hardwood, poplar and engineered furniture laminate products. The chair's frame joints are joined using staples, glue and mortise and tenon jointery for long lasting durability.

The sinuous spring system on an UltraComfort lift chair follows the manufacturing practices found in the nation's finest shops since its introduction in 1934. Traditional furniture building techniques are the foundation of every UltraComfort lift chair. The springs are secured in the front and back with insulated clips to prevent squeaking and sagging. Our seats have five seat springs compared to four found in most other lift chairs. To further enhance the strength and durability of our springs, we secure them with tie wire and material to the seat side rail. We follow the same process with the springs found in the backrest, further reducing noise and sagging for a longer lifetime of use. This forms the foundation for attaching 1.8 density seat foam with California 117 fire rating.

UltraComfort is proud to be a pioneer in developing a chaise pad that is superior in the marketplace. The pad is sewn to a seat covering and then secured to the ottoman, preventing movement of the chaise pad while the chair is in use. The chaise pad is further secured from the front to the back and then side to side. The chaise pad is then apex sewed, which further secures the fabric and foam to the seat for years of trouble-free use. Attachable headrest covers are standard on most styles of UltraComfort lift chairs.

## User-friendly feature of every UltraComfort lift and recline chair:

Easy to use battery backup system. Each UltraComfort lift and recliner has a battery backup system in the electrical transformer for two 9 volt batteries. In the event of a power failure, the battery system will raise the chair from the reclined to the seated position. The batteries should be replaced after one use.



UltraComfort  
AMERICA

Positioning you for life.

UltraComfort  
Phone: 866-793-5100  
Fax: 866-255-9962  
web: [www.ultracomfort.net](http://www.ultracomfort.net)



Literature is current at time of printing. UltraComfort reserves the right to make changes to the product or literature at any time.



Our chairs meet some of the toughest safety standards ever. Our entire chair meets ETL (Electrical Testing Lab) standards to ensure electrical safety. ETL is a nationally recognized, third party testing facility.