

Leisure COLLECTION



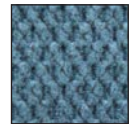
UC332-L
shown in
Cornflower

UC332-M
shown in
Rosewood

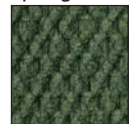
Autumn



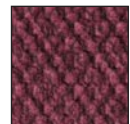
Cornflower



Spring



Rosewood



Chestnut



Geranium



The comfort of the perfect sized chair has expanded into the Leisure collection! The UC332 with a well appointed, seamed back and stylish armrest design is available in medium and large sizes for optimized comfort at an affordable price.

UC332

UltraComfort[™]
AMERICA

Positioning you for life.

PROUDLY MADE

BY AMERICANS
with Domestic & Imported Materials

Leisure COLLECTION

UC 332

Model Number	UC332M	UC322L
Size	Medium	Large
Weight Capacity	375 LB	375 LB
Recline Positions	3	3
Chaise Seat	No	No
Pocketed Coil Seating System	No	No
Back Type	Seam	Seam
Head Rest Cover	Yes	Yes
Arm Covers	Yes	Yes
Battery Back Up	Yes	Yes
Overall Width	32"	34"
Overall Height	42"	44"
Width Between Arms	21"	23"
Floor to Top of Seat	18.5"	18.5"
Seat Depth	21.5"	23"
Seat to Top of Back	28"	30"
Seat to Top of Arm	7"	8.5"
Seat Angle Raised	16°	16°
Distance Required from Wall Reclined	17"	18"
Extension Reclined from Back of Seat to End of Foot Rest	43"	43"
Life Time Warranty, Chair Frame, Lift Frame, Recline Frame, Recline Mechanism	Yes	Yes
Warranty on Electrical parts	2 YR	2 YR
Pro Rated Years 4 Thru 7	No	No
Warranty on Mechanical Labor	1 YR	1 YR
Warranty on Electrical Labor	1 YR	1 YR
Warranty on Fabric and Foam, and Pocketed Coils	1 YR	1 YR
Removable Back Option	Yes	Yes
Customizable *	No	No
Left Hand Control Option Available	Yes	Yes
Extra Pocket Option Available	Yes	Yes
4-Motor Heat & Massage Available	Yes	Yes
2-Motor Heat & Massage Available	No	No
Foot Rest Extension Option Available	No	No
Smart Tek System	Yes	Yes

* See Customize Chart for dimension limits
 Sizes may vary depending on fabric, filling material, upholstery and carpet thickness. All measurements taken on concrete floor using levels and metal rulers.



Literature is current at time of printing. UltraComfort reserves the right to make changes to the product or literature at any time.



Complies with
 UL 73 and
 CSA C22.2 No. 68



User-friendly feature of every UltraComfort lift and recline chair:

Easy to use battery backup system. Each UltraComfort lift and recliner has a battery backup system in the electrical transformer which operates on two 9 volt batteries. In the event of a power failure, the battery system will raise the chair from the reclined to the seated position. The batteries should be replaced after one use.



UltraComfort™
 AMERICA

Positioning you for life.

UltraComfort
 Phone: 866-793-5100
 Fax: 866-255-9962
 web: www.ultracomfort.net