

# Tranquility COLLECTION



shown in  
Anchor



Antique



Bamboo\*



Bittersweet



Eucalyptus\*



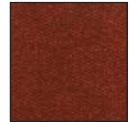
Sandstorm



Morning  
Glory\*



Anchor



Rhubarb\*



Oxford



Silt



Mahogany



Short on space, but searching for extreme comfort? Look no further than our space saving power lift recliner. It has a well-appointed, seamed back and forward gliding recline motion.

UC544



\*Additional upcharge  
\*\*See sell sheet for 30 color option.

*UltraComfort*<sup>™</sup>  
AMERICA  
Positioning you for life.



**UC544**

Model Number	UC544
Size	Medium
Weight Capacity	350 LB
Recline Positions	Space Saver
Chaise Seat	Yes
Pocketed Coil Seat	No
Back Type	Seam
Head Rest Cover	Yes
Arm Covers	No
Battery Back Up	Yes
Overall Width	32.5"
Overall Height	41.5"
Width Between Arms	20"
Floor to Top of Seat	19"
Seat Depth	21"
Seat to Top of Back	28.5"
Seat to Top of Arm	5.5"
Seat Angle Raised	20°
Distance Required from Wall Reclined	5"
Extension Reclined from Back of Seat to End of Foot Rest	42.5"
Life Time Warranty, Chair Frame, Lift Frame, Recline Frame, Recline Mechanism	Yes
Warranty on Electrical parts	3 YR
Pro Rated Years 4 Thru 7	Yes
Warranty on Mechanical Labor	3 YR
Warranty on Electrical Labor	1 YR
Warranty on Fabric and Foam, and Pocketed Coils	1 YR
Removable Back Option	Yes
Straight Lift Option Available	No
Left Hand Control Option Available	No
Extra Pocket Option Available	No
4-Motor Heat & Massage Available	Yes
2-Motor Heat & Massage Available	No
AutoFlex Available	No
Foot Rest Extension Option Available	No
Smart Tek System	Yes



**User-friendly feature of every UltraComfort recline chair:**

Easy to use battery backup system. Each UltraComfort recliner has a battery backup system in the electrical transformer which operates on two 9 volt batteries. In the event of a power failure, the battery system will raise the chair from the reclined to the seated position. The batteries should be replaced after one use.

\* See Customize Chart for dimension limits  
Sizes may vary depending on fabric, filling material, upholstery and carpet thickness.  
All measurements taken on concrete floor using levels and metal rulers.



Literature is current at time of printing. UltraComfort reserves the right to make changes to the product or literature at any time.



Complies with  
UL 73 and  
CSA C22.2 No. 68



Positioning you for life.

**UltraComfort**  
Phone: 866-793-5100  
Fax: 866-255-9962  
web: [www.ultracomfort.net](http://www.ultracomfort.net)